



**REGISTERED OFFICE**

406 Onyx, Akshar Cross Road,  
O. P. Road, Vadodara 390020.  
Gujarat. INDIA.

**FOR FURTHER SUPPORT**

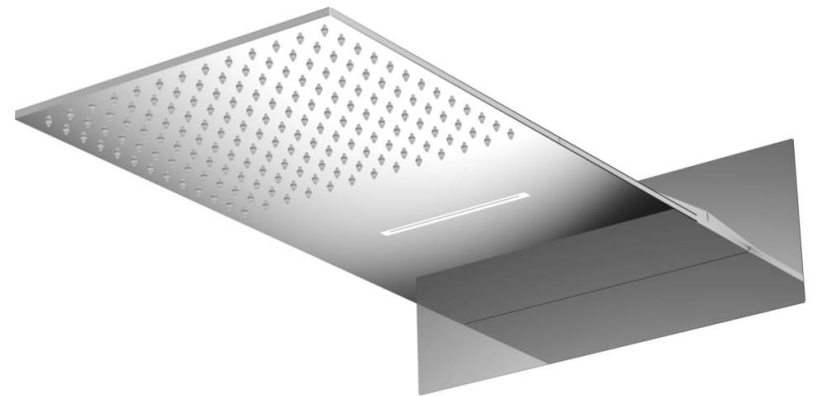
**CALL US ON**

+91 9408630765  
+91 7930256667  
+91 2652280178

**WRITE TO US AT**

support@jaaz.in

www.jaaz.in

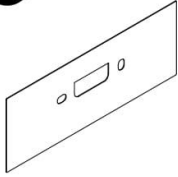


Rain shower  
ADWMS-300

## INSTALLATION GUIDE

### PARTS

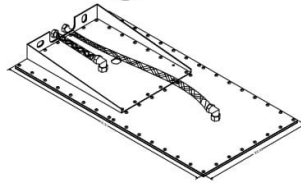
**01** Back Plate



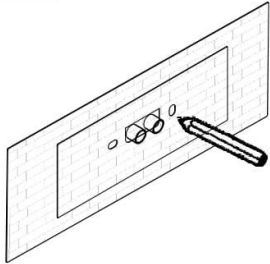
**02** Explosion Screw



**03** Shower Assembly

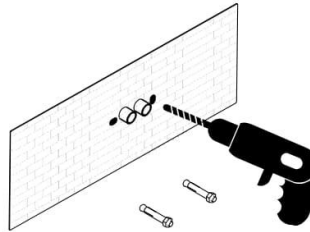


### STEP 1



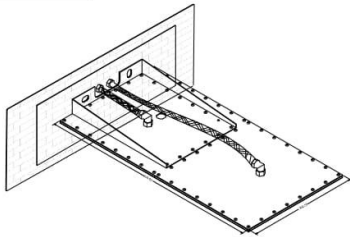
Take out the back plate and use a pen to mark down the screw hole of both sides on the wall, please note that the center hole must aim at the water inlet pipe.

### STEP 2



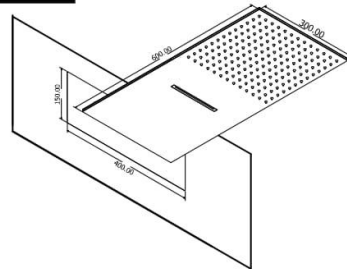
Use a electric drill at the marked screw hole and drill it in 12mm diameter, Depth around 60mm. Use a hammer to knock down the screw inside the wall

### STEP 3



Install the back plate on the wall and the whole shower assembly on the screw, fix up the water inlet assembly with the shower.

### STEP 4



Now the installation is finished.

We wish to thank you for purchasing and investing your trust in JAAZ Sandwich Rain Shower. We will do everything in our power to uphold this trust. Please read installation and care instruction carefully, because damage to surface & underlying material results from improper treatment is not covered by warranty .

### Care instruction

Do not use any abrasive sponges or scouring agents for cleaning. We also advise you not to use cleaning agents containing solvent or acid, lime scale removers, household vinegar and cleaning agents containing agents with acetic acid in them. They are aggressive to the surface and will leave your Rain Shower dull & scratched. As the formulate of commercially available cleaning agents frequently change, we cannot guarantee they will provide the gentle care to our Rain Shower deserve. Clean the Rain Shower with a little soap and a moist cloth only. Then simply rinse off and wipe dry. You can avoid lime spots by drying the shower each time it is used . Water Supply: Minimum Pressure 3 bar, Maximum Pressure 4bar.

Water Hardness: If water hardness exceeds 180mg/L, we strongly recommend the use of water softening system. Warranty does not cover any damage caused due to water hardness.

### Warranty - 3 years

Proven manufacturing & Material defects would be replaced free of cost during 3 year warranty period, provided above care instruction are followed properly .

\_\_\_\_\_ Place & Date \_\_\_\_\_ Dealer Stamp & Sign